

**MATERIAL AND FINISH:**

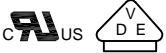
Insulator: Glass filled Thermoplastic, color black, UL-94V-0

Contacts: Bronze, Nickel plated

**ELECTRICAL SPECIFICATIONS:**

Rated current: 2.5A

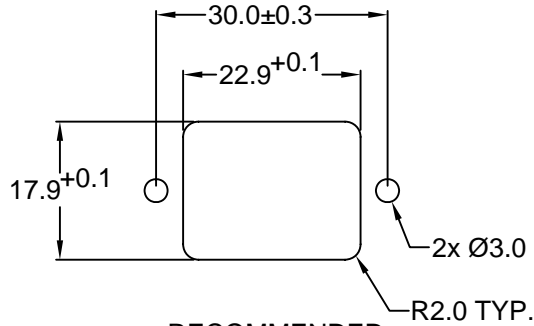
Rated voltage: 250VAC



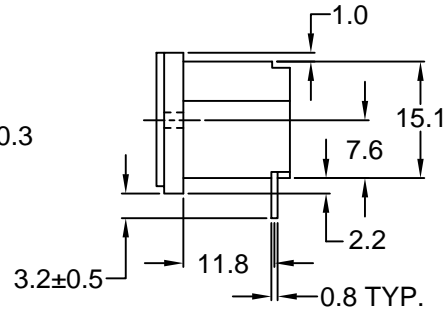
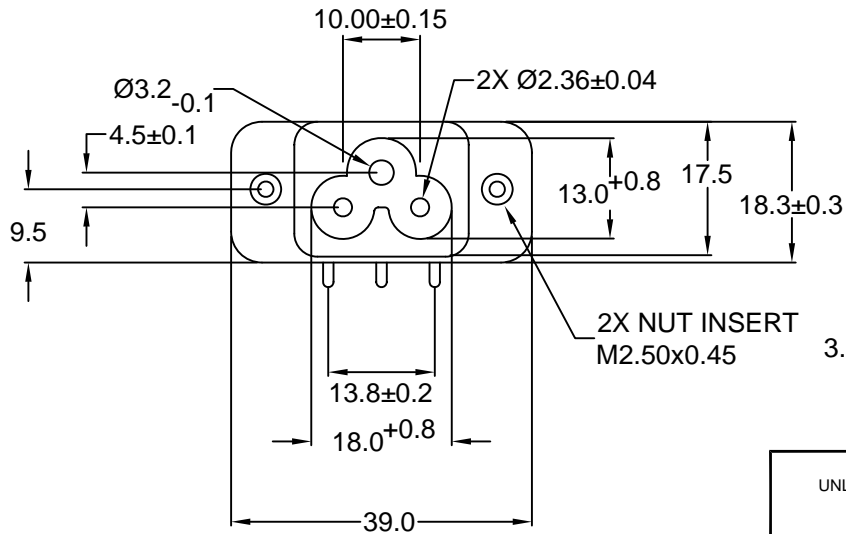
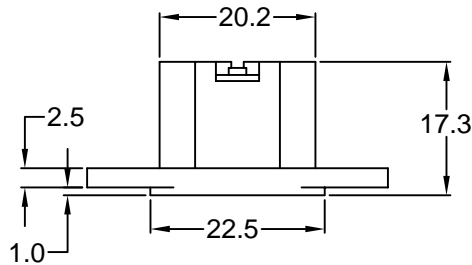
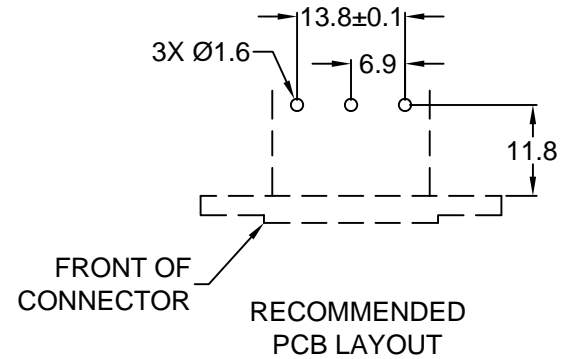
Insulation resistance: 100 Mohm min. @ 500VDC

Dielectric withstanding voltage: 2000VAC for one minute

**RoHS  
COMPLIANT**



RECOMMENDED  
PANEL CUTOUT



REV		DATE		CHANGE		CHNG		CHK		APPR	
A	B	C	D	E	TD	PB	TD	PB	SS	TD	PB
A	03/00	DELETE DUPLICATE DIM	TD	JJ	PB						
B	5/9/00	REV'D TOL. PER IEC 60320	TD	JJ	PB						
C	8/6/01	ADD PANEL CUTOUT	PB	SS	TD						
D	11/09/01	REVISED / UPDATED	GQ	TD	PB						
E	2/15/06	CHNG. PANEL CUTOUT, ADD OVERALL DEPTH	PB								

TOLERANCE UNLESS OTHERWISE SPECIFIED	
X	± 1
X.X	± 0.4
X.XX	± 0.20
DRAWN BY	SS
DATE:	03/02/00
CHECK BY	PB
DATE:	03/02/00
APPR BY	TD
DATE:	03/02/00

**Power Dynamics, Inc.**  
 Phone: 973 560-0019 Whippany, New Jersey Fax: 973 560-0076

PART: MINIATURE IEC 60320 C6 APPL. INLET;  
 FLUSH FLANGE MOUNT, PC TERMINALS

**42R51-5131RA**

SIZE: A  
 SCALE: NTS

ALL DIMENSIONS FOR REFERENCE ONLY  
 DIMENSIONS ARE IN MILLIMETERS

SHEET 1 of 1  
 REV: E